

# JEFFERSON

EX  
EX-STOCK

PTO  
PAINT  
TO ORDER  
10  
WORKING DAYS

CMS  
COLOUR MATCH  
SERVICE  
20  
WORKING DAYS

MTO  
MADE TO ORDER  
SANDED  
15  
WORKING DAYS

MTO  
MADE TO ORDER  
PAINTED  
20  
WORKING DAYS



EX EX-STOCK

PTO PAINT TO ORDER

	WHITES/CREAMS	BEIGES	BLUES	GREENS	GREYS	PURPLES
Sanded Ash	Brilliant White	Shell	Light Blue	Light Teal	Dust Grey	Cashmere
Light Oak	Porcelain	Biscuit	Powder Blue	Viridian	Lava	Lavendar Grey
Ivory	White Cotton	Stone Grey	Pantry Blue	Deep Forest	Gun Metal Grey	Deep Heather
Mussel			Airforce		Graphite	
Light Grey			Parisian Blue			
Sage Green			Marine			
Stone						

CMS Colour Match Service

## DOOR SPECIFICATION

Description	5 piece solid frame with raised veneer centre panel	
Finish	Oak	Painted
Frame material	Oak	Ash
Centre panel material	Oak veneer	Ash veneer
Door thickness	20mm	
Frame width	93mm	
Edge colour	Oak	As face
Reverse colour	Oak	As face

## MFC BOARD MATCHES

Ivory	Egger U104
Mussel	Egger U100
Light Grey	Egger U708

For all other MFC options please refer to our current price list.

Please note these are suggested board matches only. We strongly recommend that you view samples before making your selection.

\* Jefferson Sanded features a solid ash frame with a raised, veneered ash centre panel. The Jefferson ash sanded door is only suitable for overpainting.

## STANDARD DRAWERFRONTS & DOORS

- 115 x 597 routed drawer front
- 140 x 297 routed drawer front
- 140 x 397 routed drawer front
- 140 x 447 routed drawer front
- 140 x 497 routed drawer front
- 140 x 597 routed drawer front
- 140 x 797 routed drawer front
- 140 x 897 routed drawer front
- 140 x 997 routed drawer front
- 175 x 397 routed drawer front
- 175 x 497 routed drawer front
- 175 x 597 routed drawer front
- 115 x 597 slab
- 140 x 297 slab
- 140 x 397 slab
- 140 x 447 slab
- 140 x 497 slab
- 140 x 597 slab
- 140 x 797 slab
- 140 x 897 slab
- 140 x 997 slab
- 175 x 397 slab
- 175 x 497 slab
- 175 x 597 slab
- 283 x 497
- 283 x 597
- 283 x 797 with vertical dividing rail
- 283 x 897 with vertical dividing rail
- 283 x 997 with vertical dividing rail
- 355 x 497
- 355 x 597
- 355 x 797 with vertical dividing rail
- 355 x 897 with vertical dividing rail
- 355 x 997 with vertical dividing rail
- 450 x 597
- 495 x 397
- 495 x 597
- 570 x 297
- 570 x 397
- 570 x 447
- 570 x 497
- 570 x 597
- 645 x 597
- 715 x 147 routed front
- 715 x 147 slab door
- 715 x 257
- 715 x 297
- 715 x 273
- 715 x 273 pair
- 715 x 315
- 715 x 315 pair
- 715 x 320 quadrant door
- 715 x 347
- 715 x 397
- 715 x 397 georgian frame (3 panes)
- 715 x 397 plain frame
- 715 x 447
- 715 x 497
- 715 x 497 georgian frame (5 panes)
- 715 x 547
- 715 x 597
- 895 x 297
- 895 x 397
- 895 x 447
- 895 x 497
- 895 x 497 georgian frame (5 panes)
- 895 x 597
- 980 x 597
- 1060 x 497 georgian frame (5 panes)
- 1245 x 297
- 1245 x 397
- 1245 x 497
- 1245 x 597

Bench  
KITCHENS

ORDER ONLINE  
benchkitchens.co.uk

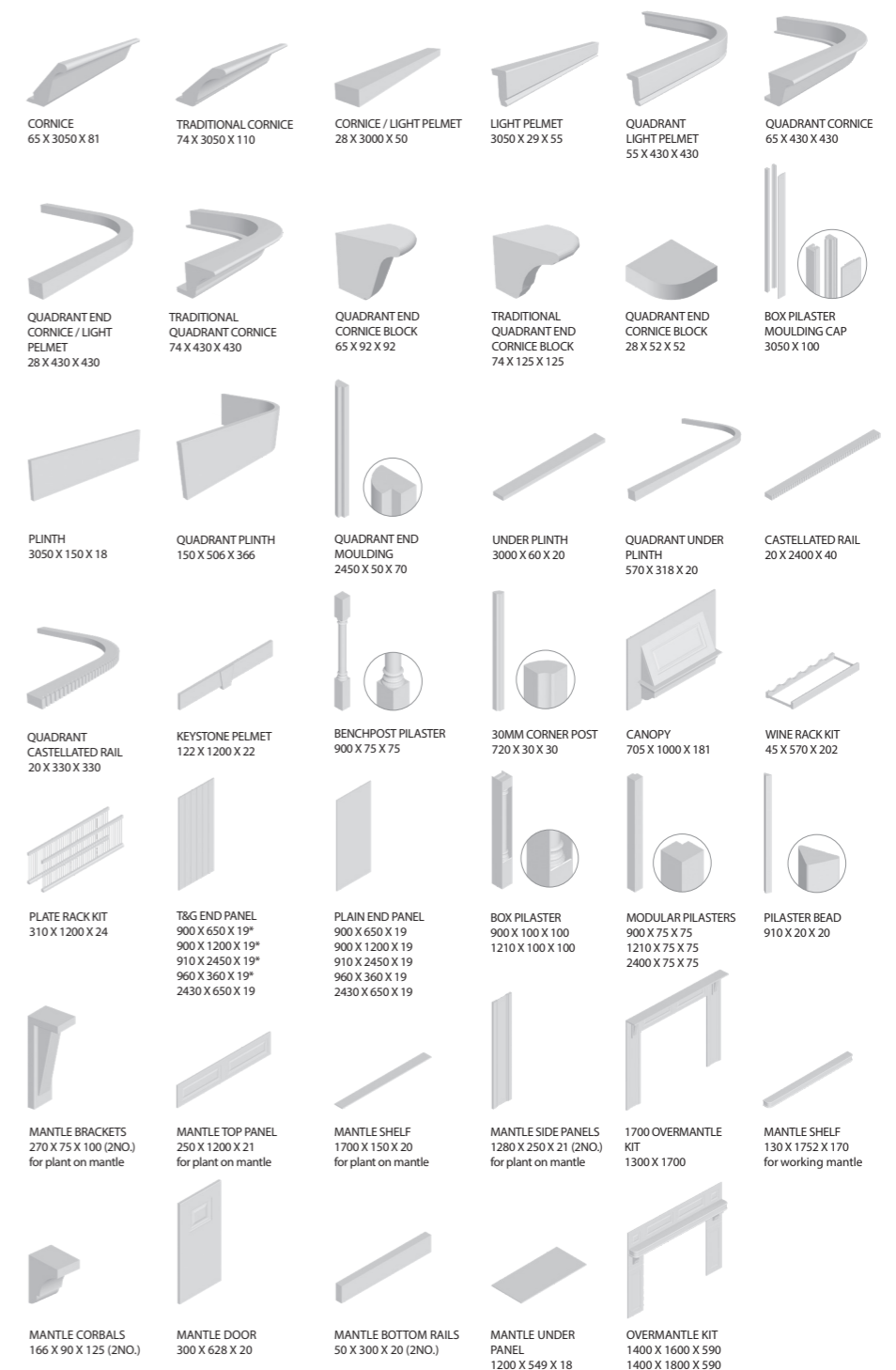
TEL: 0117 279 6890  
E: kitchens@benchkitchens.co.uk

EX PTO CMS

## STANDARD DOORS



## STANDARD ACCESSORIES



\*The T & G grooving and the timber grain run up and down the panel height.



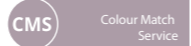
MADE TO ORDER  
SANDED  
15  
WORKING DAYS



MADE TO ORDER  
PAINTED  
20  
WORKING DAYS



WHITES/CREAMS	BEIGES	BLUES	GREENS	GREYS	PURPLES
Brilliant White	Shell	Light Blue	Sage Green	Light Grey	Cashmere
Porcelain	Stone	Powder Blue	Light Teal	Dust Grey	Lavender Grey
Ivory	Biscuit	Pantry Blue	Viridian	Lava	Deep Heather
White Cotton	Stone Grey	Airforce	Deep Forest	Gun Metal Grey	
Mussel		Parisian Blue		Graphite	
		Marine			



### DOOR SPECIFICATION

Description	5 piece solid frame with raised veneer centre panel	
Finish	Oak	Painted
Frame material	Oak	Ash painted with a brushed finish giving a greater depth of grain
Centre panel material	Oak veneer	Ash veneer
Door thickness	20mm	
Frame width	93mm	
Edge colour	Oak	As face
Reverse colour	Oak	As face

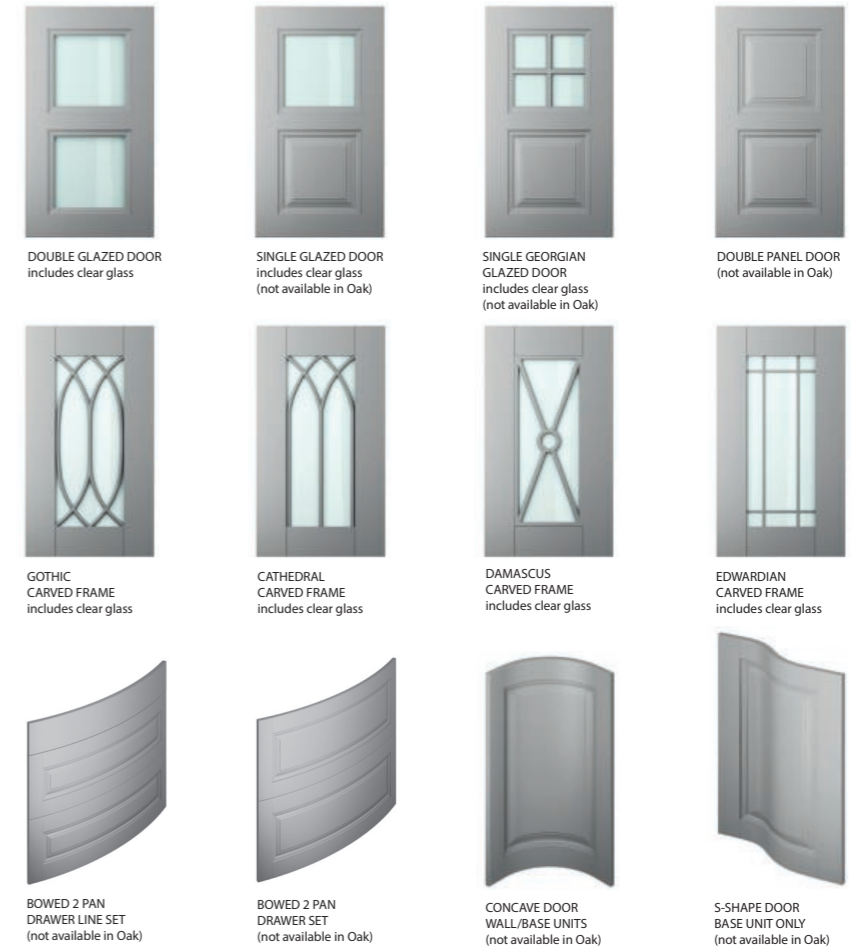
### MFC BOARD MATCHES

Ivory	Egger U104
Mussel	Egger U100
Light Grey	Egger U708
For all other MFC options please refer to our current price list.	
Please note these are suggested board matches only. We strongly recommend that you view samples before making your selection.	
* Jefferson Sanded features a solid ash frame with a raised, veneered ash centre panel. The Jefferson ash sanded door is only suitable for overpainting.	

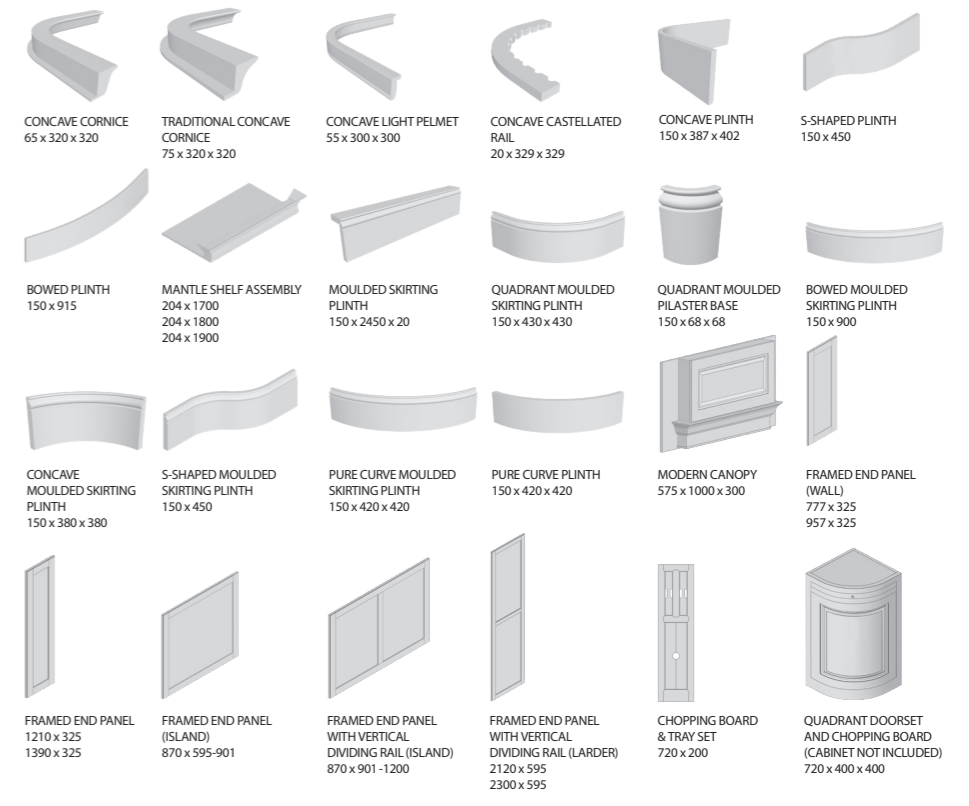
### MADE TO ORDER DRAWERFRONTS & DOORS

door	450 x 497
	495 x 497
	570 x 347
	895 x 273
	895 x 347
	895 x 547
	1060 x 497
	1060 x 597
	1245 x 347
	1245 x 447
double glazed door	715 x 397
	715 x 447
	715 x 497
	895 x 397
	895 x 447
	895 x 497
	1060 x 397
	1060 x 447
	1060 x 497
single glazed door	715 x 397
	715 x 447
	715 x 497
	895 x 397
	895 x 447
	895 x 497
	1060 x 397
	1060 x 447
	1060 x 497
single georgian glazed door	715 x 397
	715 x 447
	715 x 497
	895 x 397
	895 x 447
	895 x 497
	1060 x 397
	1060 x 447
	1060 x 497
double panel door	715 x 397
	715 x 447
	715 x 497
	895 x 397
	895 x 447
	895 x 497
	1060 x 397
	1060 x 447
	1060 x 497
gothic carved frame	715 x 447
	715 x 497
	895 x 447
	895 x 497
	1060 x 447
	1060 x 497
	1060 x 497
	1245 x 447
	1245 x 497
cathedral carved frame	715 x 447
	715 x 497
	895 x 447
	895 x 497
	1060 x 447
	1060 x 497
	1245 x 447
	1245 x 497
damascus carved frame	715 x 447
	715 x 497
	895 x 447
	895 x 497
	1060 x 447
	1060 x 497
	1245 x 447
	1245 x 497
edwardian carved frame	715 x 447
	715 x 497
	895 x 447
	895 x 497
	1060 x 447
	1060 x 497
	1245 x 447
	1245 x 497
bowed 2 pan drawer line set (1x140 x 897, 2 x 283 x 897)	715 x 897
bowed 2 pan drawer line set (2 x 355 x 897)	715 x 897
concave door for wall unit (internal R200)	715 x 897
concave door for wall unit (internal R200)	895 x 300 x 300
concave door for base unit (internal R200)	715 x 300 x 300
s-shape door for base unit	715 x 450

### MADE TO ORDER DOORS



### MADE TO ORDER ACCESSORIES





SPECIAL SIZES ARE AVAILABLE MADE TO ORDER, PLEASE SEE (h) & (w) LIMITATIONS PROVIDED WHERE APPLICABLE.  
GLASS IS NOT SUPPLIED WITH SPECIAL SIZE FRAMES. PLEASE NOTE: SPECIAL SIZES ARE NOT AVAILABLE IN LIGHT OAK .

AVAILABLE  
 NOT AVAILABLE

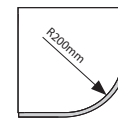
### MAX & MIN SIZES

	H \ W	147	297	397	447	497	547	597	697	797	897	997	1097	1197
SLAB DRAWERFRONTS	90	✓	✓	✓	✓	✓	✓	✓	✓	✓	✓	✓	✓	✓
	140	✓	✓	✓	✓	✓	✓	✓	✓	✓	✓	✓	✓	✓
	175	✓	✓	✓	✓	✓	✓	✓	✓	✓	✓	✓	✓	✓
DRAWERFRONTS with routed raised centre panel.	90	-	✓	✓	✓	✓	✓	✓	✓	✓	✓	✓	✓	✓
	140	-	✓	✓	✓	✓	✓	✓	✓	✓	✓	✓	✓	✓
	175	-	✓	✓	✓	✓	✓	✓	✓	✓	✓	✓	✓	✓
PAN DRAWERS  Door widths over 597 will have a vertical dividing rail.	255	-	✓	✓	✓	✓	✓	✓	✓	✓	✓	✓	✓	✓
	283	-	✓	✓	✓	✓	✓	✓	✓	✓	✓	✓	✓	✓
	355	-	✓	✓	✓	✓	✓	✓	✓	✓	✓	✓	✓	✓
DOORS  Door heights over 1245 will have a horizontal dividing rail.  Please note: As standard, the dividing rail will be centred horizontally on the door. If you require an alternative position you must specify this when placing your order.	450	-	✓	✓	✓	✓	✓	✓	✓	-	-	-	-	-
	490	-	✓	✓	✓	✓	✓	✓	✓	-	-	-	-	-
	570	-	✓	✓	✓	✓	✓	✓	✓	-	-	-	-	-
	715	-	✓	✓	✓	✓	✓	✓	✓	-	-	-	-	-
	895	-	✓	✓	✓	✓	✓	✓	✓	-	-	-	-	-
	1060	-	✓	✓	✓	✓	✓	✓	✓	-	-	-	-	-
	1245	-	✓	✓	✓	✓	✓	✓	✓	-	-	-	-	-
	1465	-	✓	✓	✓	✓	✓	✓	✓	-	-	-	-	-
	1965	-	✓	✓	✓	✓	✓	✓	✓	-	-	-	-	-
2250	-	✓	✓	✓	✓	✓	✓	✓	✓	-	-	-	-	

### MAX & MIN SIZES

PLAIN FRAMES	H \ W	255	297	397	447	497	597	697
Glass is not included when ordering special sizes.  Plain Frames over 1465 are not available as they would require a horizontal centre rail and therefore would no longer be defined as a Plain Frame.	283	✓	✓	✓	✓	✓	✓	✓
	355	✓	✓	✓	✓	✓	✓	✓
	570	✓	✓	✓	✓	✓	✓	✓
	715	✓	✓	✓	✓	✓	✓	✓
	895	✓	✓	✓	✓	✓	✓	✓
	1060	✓	✓	✓	✓	✓	✓	✓
	1245	✓	✓	✓	✓	✓	✓	✓
	1465	✓	✓	✓	✓	✓	✓	✓

### QUADRANT DOORS



### MAX & MIN SIZES

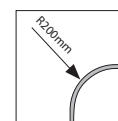
QUADRANT DOORS	H \ W	320
	570	✓
	715	✓
	895	✓
	980	✓
	1060	✓
	1245	✓

### FEATURE FRAMES & DOORS

### MAX & MIN SIZES

	H \ W	297	397	447	497	597	697
Georgian: Number of panes depends on width.	355	✓	✓	✓	✓	✓	✓
	570	✓	✓	✓	✓	✓	✓
Due to manufacturing restrictions, all other styles of feature frames & doors will be priced on request.	715	✓	✓	✓	✓	✓	✓
	895	✓	✓	✓	✓	✓	✓
	1060	✓	✓	✓	✓	✓	✓
	1245	✓	✓	✓	✓	✓	✓
Glass: Glass is not included with special sizes.	1465	✓	✓	✓	✓	✓	✓

### CONCAVE DOORS



### MAX & MIN SIZES

CONCAVE DOORS	H \ W	320
	570	✓
	715	✓
	895	✓
	980	✓
	1060	✓
	1245	✓